

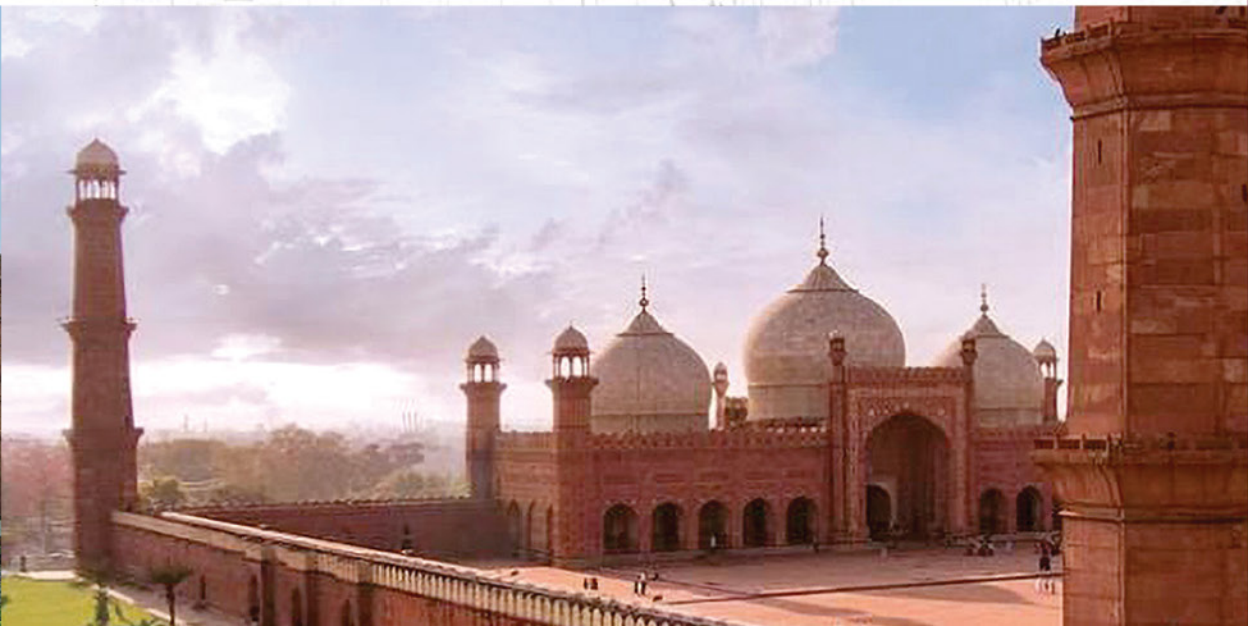


THE
GALLERIA
RESIDENCES



LAHORE

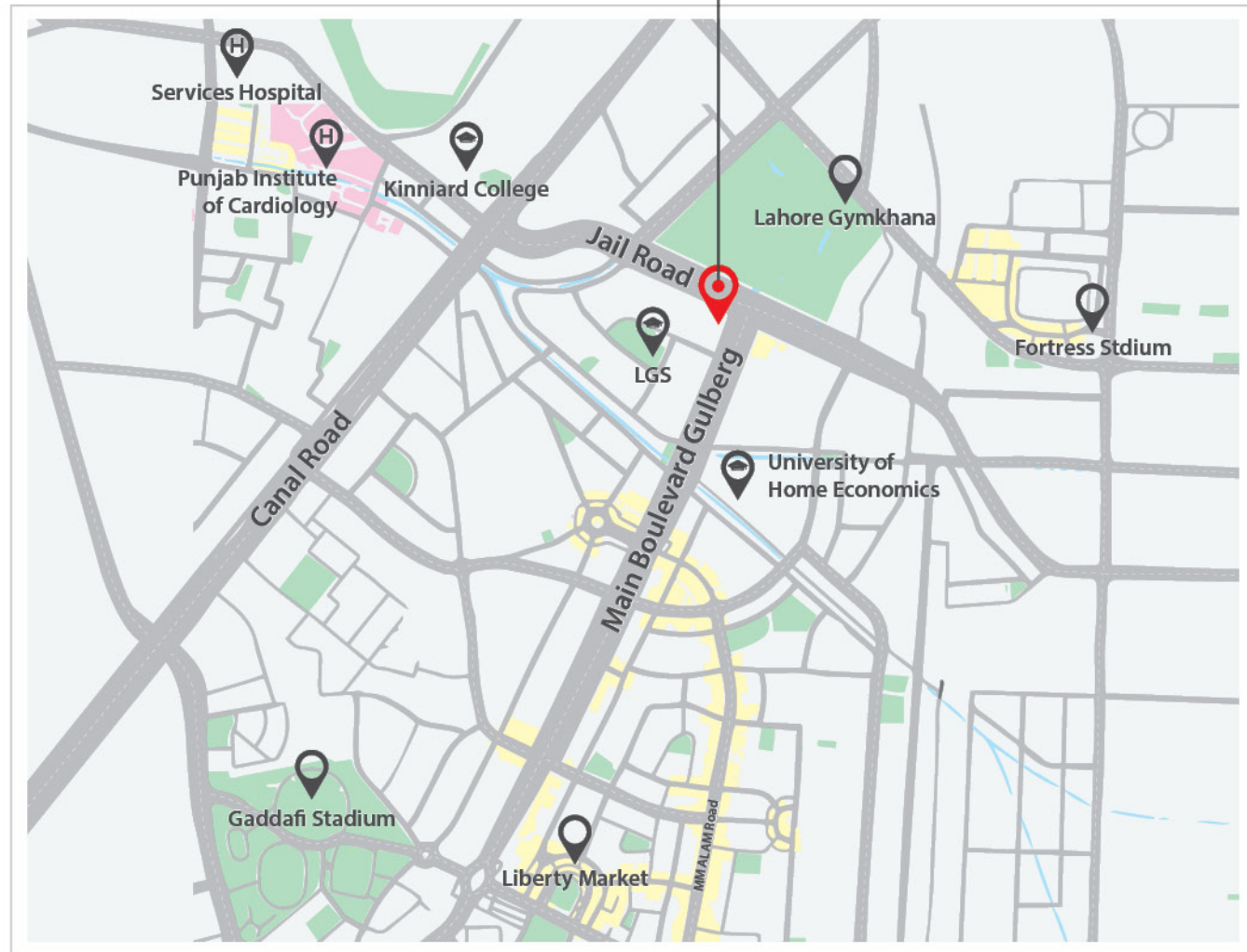
Capital of Punjab; Seat of Grand Dynasties of the years gone by; A city of cultural diversity -- of Forts, Monuments and Buildings that point to Lahore's rich heritage, and its grandiose past. City of gardens, and also known for its Centers of knowledge and learning. A thriving and pulsating city full of excitement and energy; a Metropolis. A Modern city, where fun, high fashion, and international and local cuisine all mix and attract casual, sports, and religious tourism. Its attraction and reputation transcend its borders.















the most sought-after **LOCATION**



Despite all its vastness and a mix of varied traditions, Lahore is a modern, megacity. Gulberg Boulevard is its most prestigious address for businesses, eating houses, and quality living. Galleria Residences is at the junction where it overlooks lush Golf Course of Lahore Gymkhana, Gaddafi Stadium, and the rest of the city in all its glamour and glory.



-  **LGS School**
2 Min
-  **Canal Road**
3 Min
-  **Services Hospital**
5 Min
-  **MM Alam Road**
5 Min
-  **Liberty Market**
6 Min
-  **Mall Road**
6 Min
-  **Fortress Stadium**
7 Min
-  **Royal Palm Golf & County Club**
9 Min
-  **Ferozpur Road**
9 Min
-  **Aitchison College**
10 Min
-  **Ring Road**
15 Min
-  **Airport**
23 Min





Get set to lead life in your own **ISLAND OF PRIVACY**

It is our commitment to offer to you a lifestyle that you deserve. We guarantee a luxury living, secure and serene, away from the noise and the humdrum of the city, yet located at the most happening location of Lahore. Opulent in its style, and inventory spread of 150 apartments to choose from to suit your taste. One-bedroom apartment to five-bedroom apartments, and some even on split levels, with the view that you rarely see from a city center location. Join us for a living experience that none other may offer you at Lahore.

your entry in a **GRAND STYLE**

The Oomph and style with which we shall welcome you, past the Gulberg Galleria, through the paved driveway, to our grand entry door, with a valet and our service staff at your service. You step inside our double heighted lobby, regal in its fit-out, lit up with a warmth and a charm of its own and welcoming. You could walk to its well laid out reception for information, or just relax and read the newspaper over a cup of coffee. You could also take one of the four lifts to your apartment after passing our security protocol.

You could also shop at our well laid out shops in the lobby or on the three upper floors, or alternately pass through the interconnecting passages to the Galleria Shopping Arcade.



a promise of an **UNFORGETTABLE LIFESTYLE**

The entry in the Lobby will engulf you with the feeling of expanse and depth with its contemporary design and aesthetical layout. Double floor height, lit stores of fashion ware, the connectivity corridors of Gulberg Galleria, all envelop you and create an experience of awe and wonder. Its social spaces are treated in hues of gold and grey with smoky mirrors that enhance the overall ambience. We promise residents, guests and shoppers an experience of enormous delight and satisfaction.



the exclusive **LOUNGE**

Galleria Residences offer exclusive lounges within the Lobby environment, which will provide you the warmth and exclusivity of your apartment. Hold a formal or an informal meeting or simply relax socially with friends and enjoy the ambiance with snacks served from our lobby restaurants



the space and **GRANDEUR**

Every Apartment and duplex is designed adopting our exclusive philosophy to bring in maximum light, height and air. Full spectrum view windows, provide natural ventilation and filter dust even when closed. Higher floor to floor heights have been thoughtfully provided to add to the grandeur and space in every home. This perfectly complements your finest masterpieces, antique collectables and most importantly, all your achievements.



designed to ensure **PANORAMIC VIEWS**

The Galleria Residences' orientation is purpose designed to ensure panoramic views, and plenty of sunlight and ventilation in your court. The large windows invite the beauty of the outdoors to seamlessly fuse with the indoors.

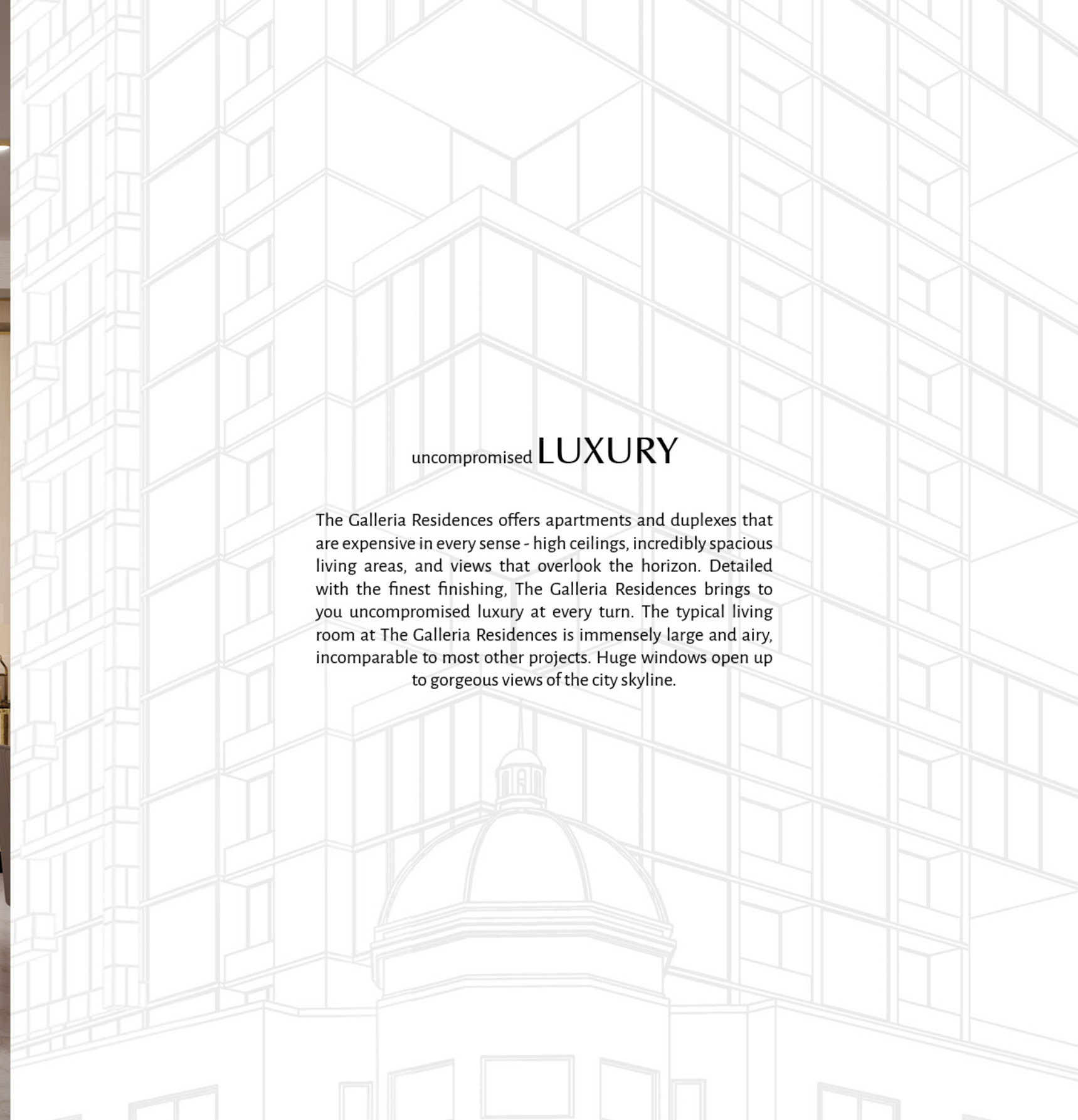
With flexibility to design, the grandeur of apartments and duplexes at The Galleria Residences befits the stature of those who will reside here. Tailor-make your home to suit your needs, simply reorganize the rooms to suit yourself, the choice is yours.





uncompromised **LUXURY**

The Galleria Residences offers apartments and duplexes that are expensive in every sense - high ceilings, incredibly spacious living areas, and views that overlook the horizon. Detailed with the finest finishing, The Galleria Residences brings to you uncompromised luxury at every turn. The typical living room at The Galleria Residences is immensely large and airy, incomparable to most other projects. Huge windows open up to gorgeous views of the city skyline.





DINING & KITCHEN

At the heart of your home, a professional kitchen is a statement of modern elegance. The kitchen is linked to the dining room and living area seating looking across cityscape. This subtle statement of elegance is upscaled with luxury features, specialized ceiling lights and wall features.





super-sized **BEDROOMS**

There is no match for the super-sized bedrooms at The Galleria Residences. These massive bedrooms will spoil you with unparalleled comfort and panoramic views from huge floor-to-ceiling windows. Disconnect yourself from the world you know and find yourself in place you will recognize in your dreams. Cocoon in sheets of comfort and let tranquility wrap itself around you.

scenic **GOLF COURSE VIEW**

In your Galleria Residences Apartment, there is no better way to make yourself a relaxation zone that your family will love than creating a cozy window seat in the room. You can enjoy the scenic golf course view outside the apartment.



view the **SKYLINE**

One of the true pleasures of city life is to get above it all, to view the skyline and the streetscape from a high vantage—not off the grid. Light floods the room along with lovely cityscape of Lahore through high windows specially designed to make you feel at the top.





elegant BATHROOMS

With ample natural light and fresh air flooding the washrooms, mornings are sure to be the best part of your day. Bringing a faucet of luxury with the finest plumbing system for seamless maintenance and repairs, without breakage of slabs, providing the highest standards of safety and hygiene.



the most **SPECTACULAR VIEWS**

At The Galleria Residences, each residence enjoys a cutting edge cosmopolitan living met by the tranquillity of luxurious living. Bask in the most spectacular views of Lahore Gymkhana golf course and cityscape, from the best seats in the house.



mesmerizing **VIEWS**

When you live by the golf course, the views are spectacular and breeze is a regular visitor. Step out onto the court, and you'll feel like you've stepped right into the city sky. Enjoy mesmerizing views till where the sky meets the ravishing golf course.



freedom to look **BEYOND CONCRETE STRUCTURES**

At The Galleria Residences, It's just magical how building design and all the natural elements come together to elevate your experience of living. The Courtyards are carefully placed to promote maximum ventilation within each unit. The apartments also overlook the beautiful Lahore Gymkhana. Just to let you enjoy that perfect view from your courtyard.





World Class Amenities

exclusive **SWIMMING POOL**

The exclusive swimming pool is the place for relaxation and comfort located at the amenities floor with a spectacular view of the Lahore gymkhana and beyond. Take a dip on the swimming pool overlooking while enjoying a dazzling drink prepared to your liking.

Relax in a Jacuzzi or indulge in a refreshing sauna bath, take a moment to disconnect with everyday stresses and reconnect with the mind, body and soul.



modern **Gym**

For a fresh and energetic start to the day, work out with a wide selection of modern equipment at the gym or pamper yourself and get some time to relax from a stressful day at yoga and aerobics classes under the supervision of experienced instructors.



the oasis of entertainment, **Screening Room**

When it comes to entertainment, we have got you covered. Equipped with the most advanced home theater setup, enjoy your favorite Netflix flicks with your guest at your very private oasis of entertainment. The Galleria Residences world class amenities will never disappoint you.



Rooftop Eateries

Looking for alfresco drinks and sky-high views in Lahore? This city rooftop is not only bringing you classic pakistani dishes and modern cocktails, but also instagrammable interiors and the rooftop vibes to match.





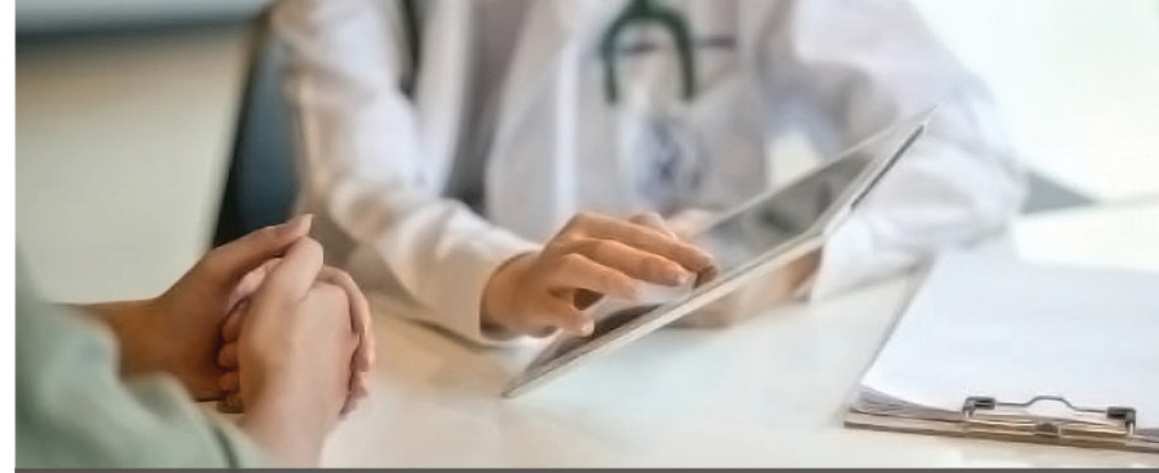
High Speed Lifts & Elevators



Building Management System



Day Care Center



24 / 7 Doctors Consultation



Supermarket



International Standards Security System



Prayer Area



Leading Fashion Brands of Gulberg Galleria Mall



Access Control System



Fire Control System



Spacious Parking with Valet Services



Laundry



House Keeping

The Visionaries



Nasim Mohammad, Founder



NIAZ GROUP **Niaz Arbaaz (pvt) Ltd**

Mr. Nasim Mohammad was the Founder and President of Niaz Arbaaz Pvt Ltd and completed the landmark shopping arcade "Gulberg Galleria", designed more on the Spanish-Moorish esthetic concept. It commenced operations on March 2013. Its immediate response and interest from all the known fashion brands and established eateries bore testimony to his belief that the success of the project depended on deliver the envisioned project on time. **The Galleria Residences** is envisioned to be the expansion of Gulberg Galleria shopping arcade.



Dr. Ghulam Murtaza Cheema

Dr. Ghulam Murtaza Cheema is an Orthopedic Surgeon who has spent 30 years in the Medical profession, as well as in construction & managing laser clinics and three teaching hospitals along with a law college. He is also building apartment buildings at two other locations in Gulberg, Lahore. Dr Ghulam Murtaza Cheema was known to Mr. Nasim Mohammed from his childhood days and is now a Director in **The Galleria Residences**.

Team



Architect and Electrical Consultant



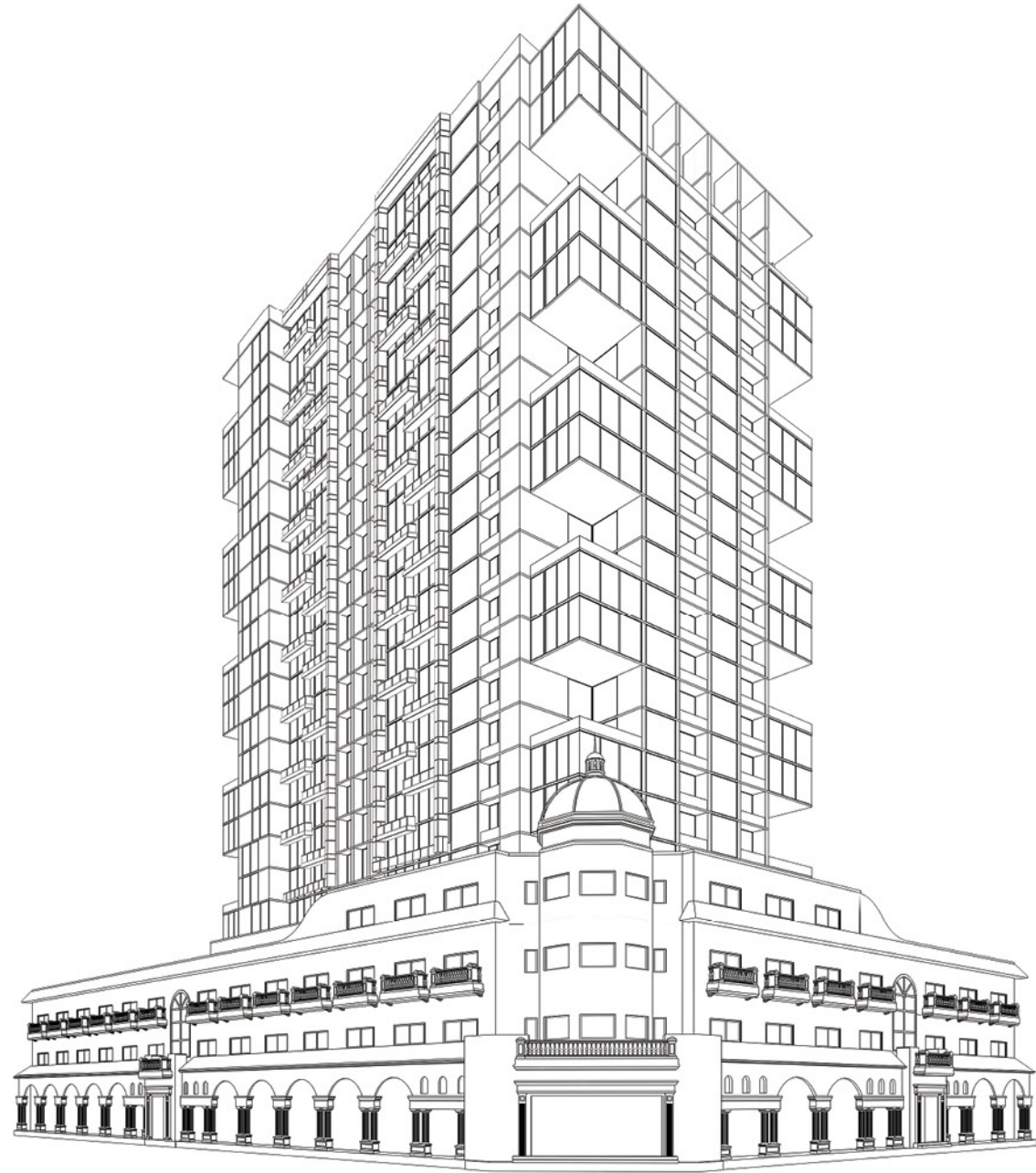
MEP Consultant

Amin Tariq Associates

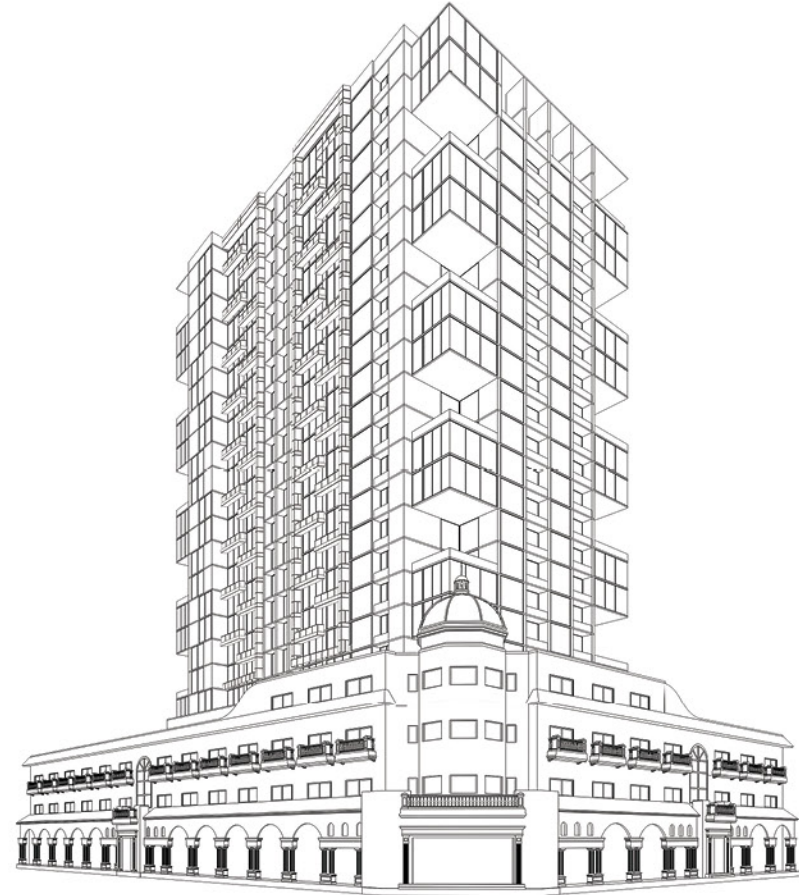
Structural Consultant



Publicity Consultant



Floor Plans

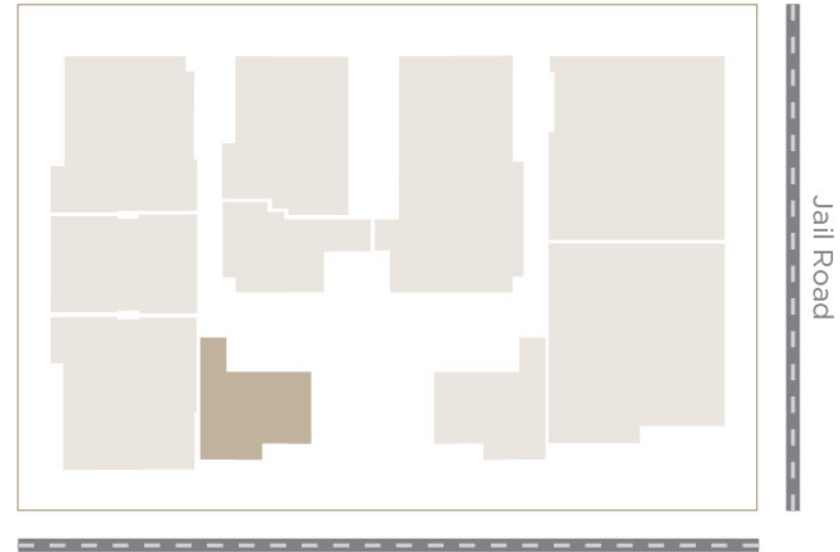


1 BEDROOM APARTMENT

Floors 6th to 21st...

- 1 Bedroom
- 1 Bathroom
- 1 Lounge & Dining
- 1 Kitchen

KEY PLAN

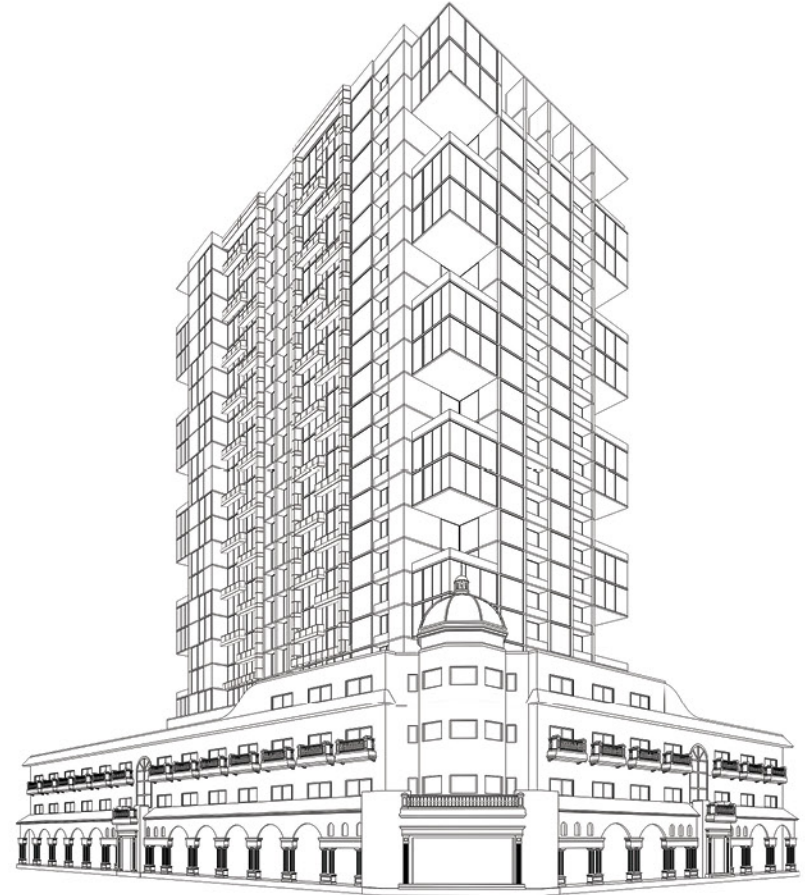


Jail Road

Main Boulevard, Gulberg

One Bed Type 8



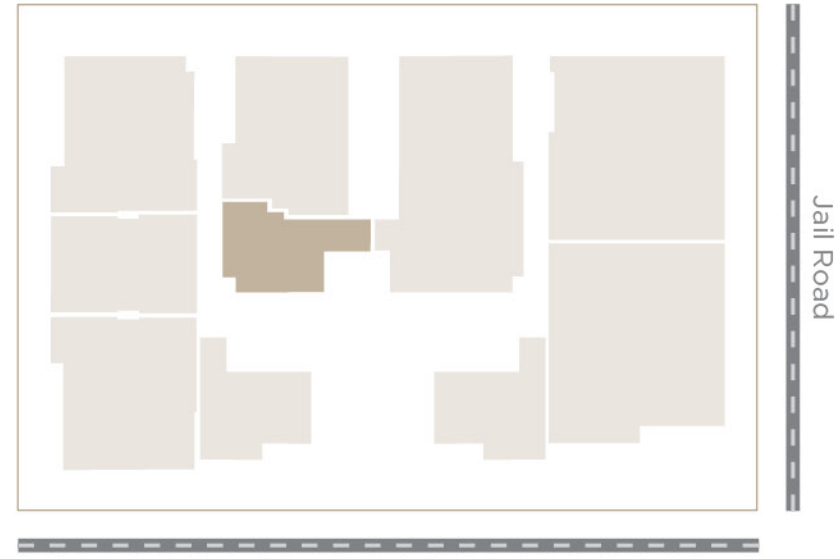


1 BEDROOM STUDIO APARTMENT

Floors 6th to 21st...

- 1 Bedroom
- 1 Bathroom
- 1 Lounge & Dining
- 1 Kitchen

KEY PLAN



Jail Road

Main Boulevard, Gulberg

One Bed Type 14



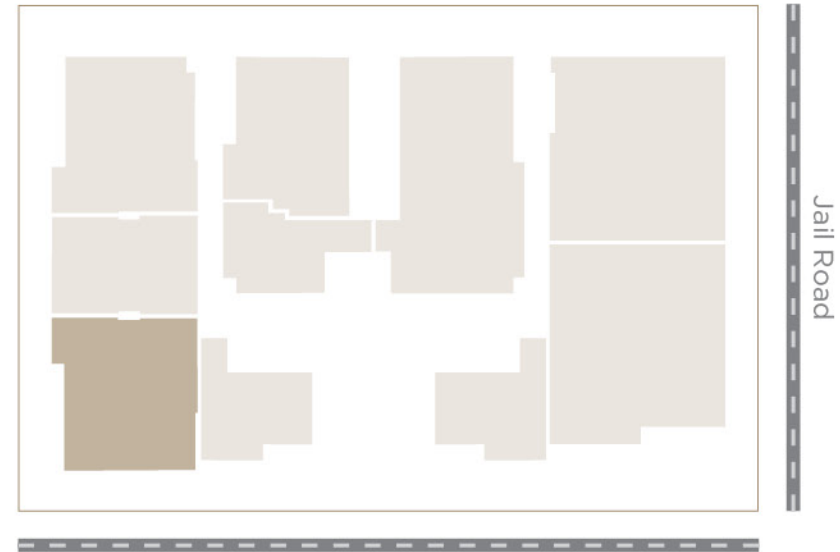


2 BEDROOM APARTMENT

Floors 6th to 21st...

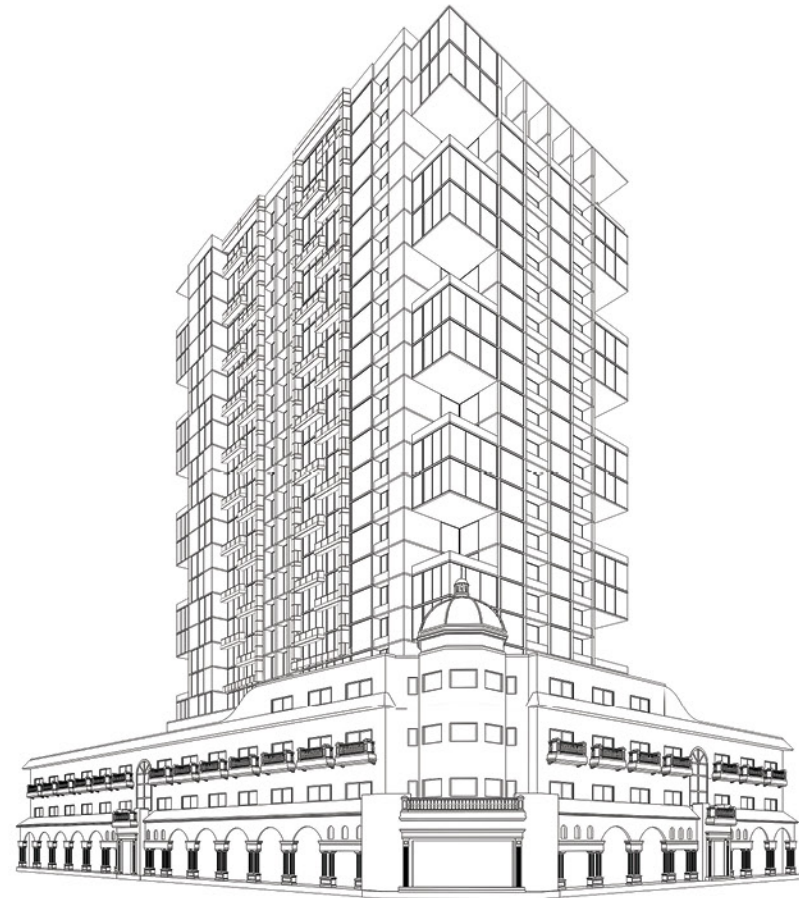
2 Bedroom
2 Bathroom
1 Living & Dining
1 Kitchen

KEY PLAN

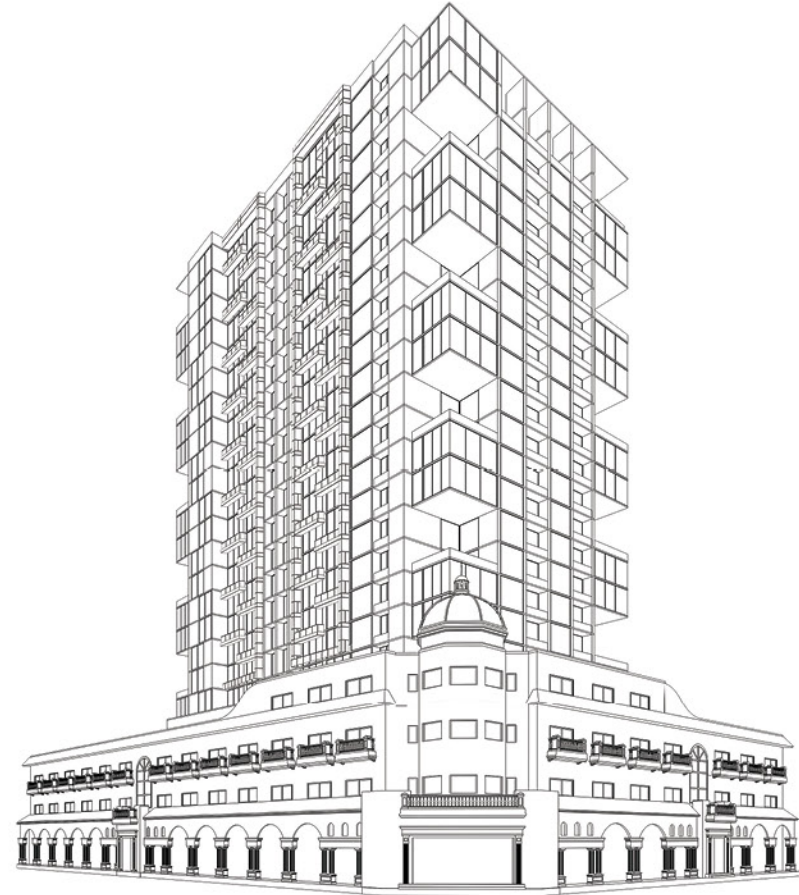


Jail Road

Main Boulevard, Gulberg



Two Bed Type 7

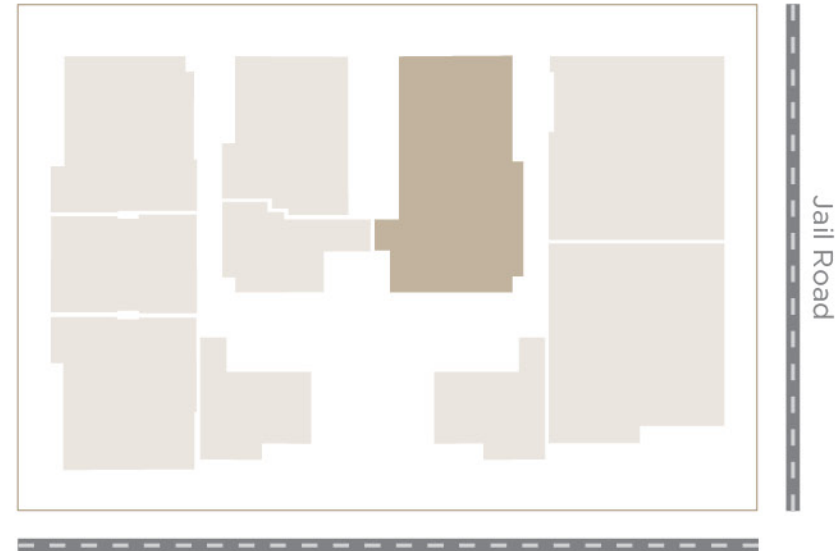


3 BEDROOM APARTMENT

Floors 6th to 21st...

- 3 Bedroom
- 3 Bathroom
- 1 Powder
- 1 Lounge & Dining
- 1 Kitchen & G. Kitchen
- 1 Maid Room
- 1 Store Room

KEY PLAN

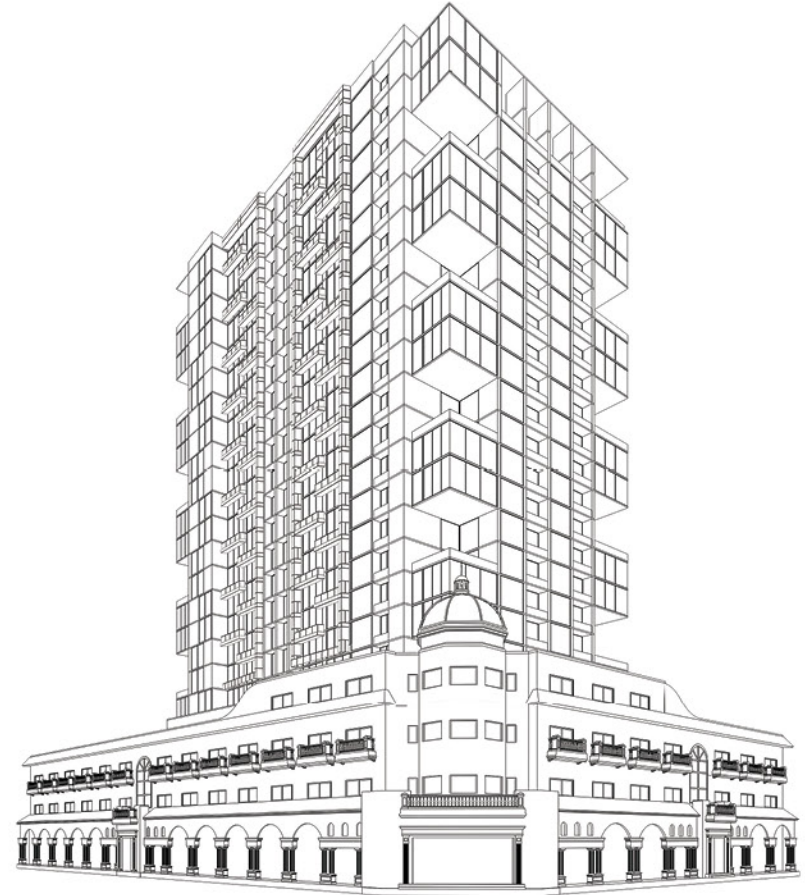


Jail Road

Main Boulevard, Gulberg

Three Bed Type 3



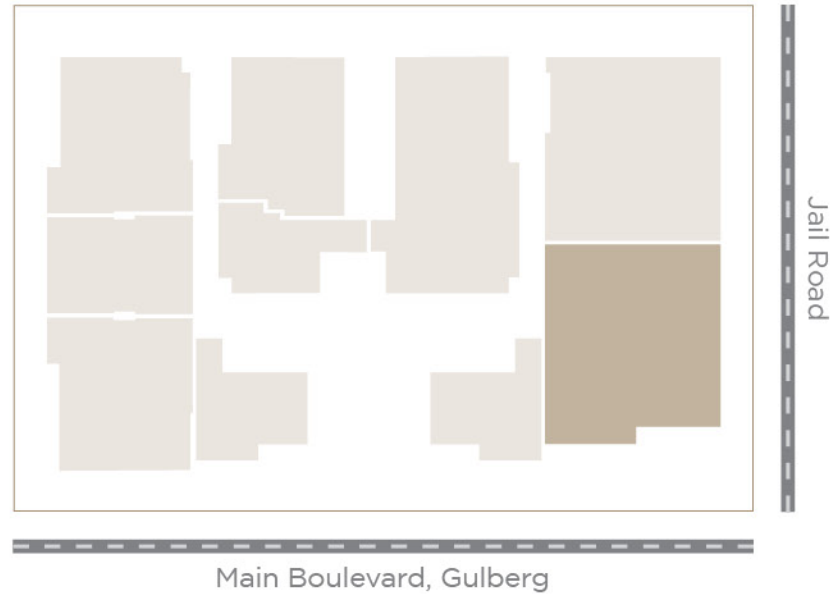


4 BEDROOM APARTMENT

Floors 6th to 21st...

- 4 Bedroom
- 4 Bathroom
- 1 Powder
- 1 Dining & Drawing
- 1 Kitchen & G. Kitchen
- 1 Study Room
- 1 Maid Room

KEY PLAN



Four Bed Type 2



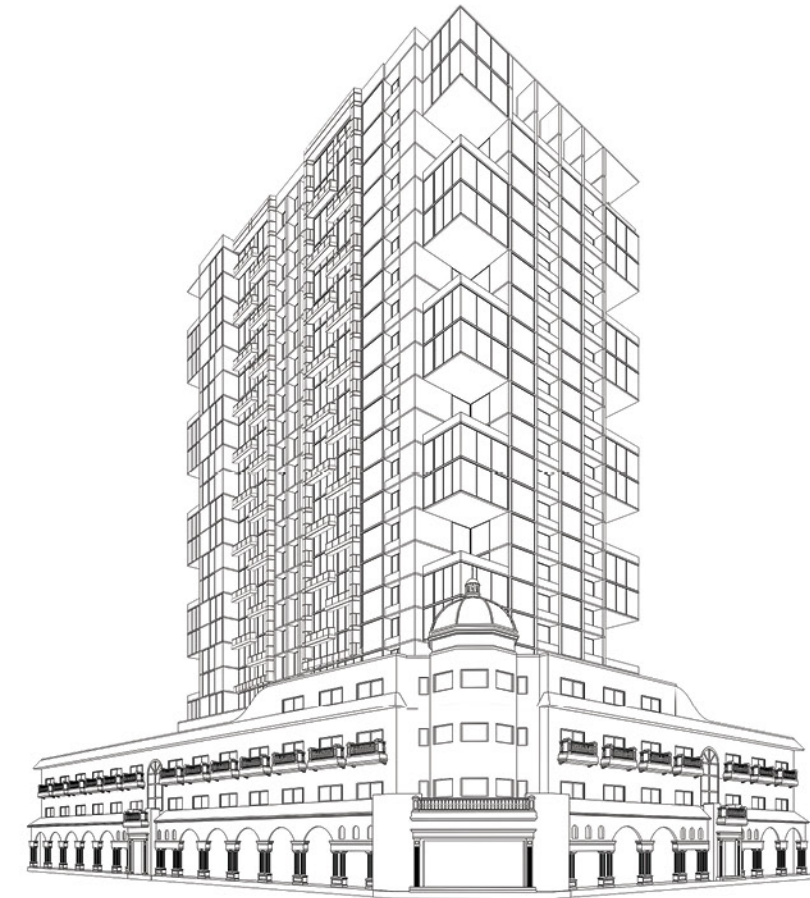
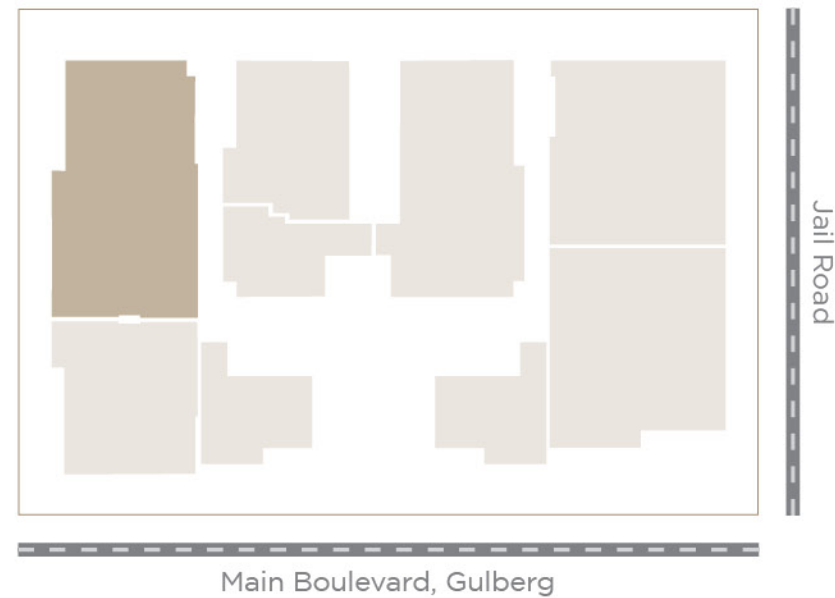


4 BEDROOM DUPLEX APARTMENT

Floors 8th, 9th, 12th, 13th,
16th, 17th, 20th, 21st...

- 4 Bedroom
- 4 Bathroom
- 1 Dining & Drawing
- 1 Kitchen
- 1 Guest Room
- 1 Maid Room
- 1 Maid Bathroom
- 1 Laundry/Store

KEY PLAN



Four Bed Duplex Type 13
Upper Level



Four Bed Duplex Type 13
Lower Level



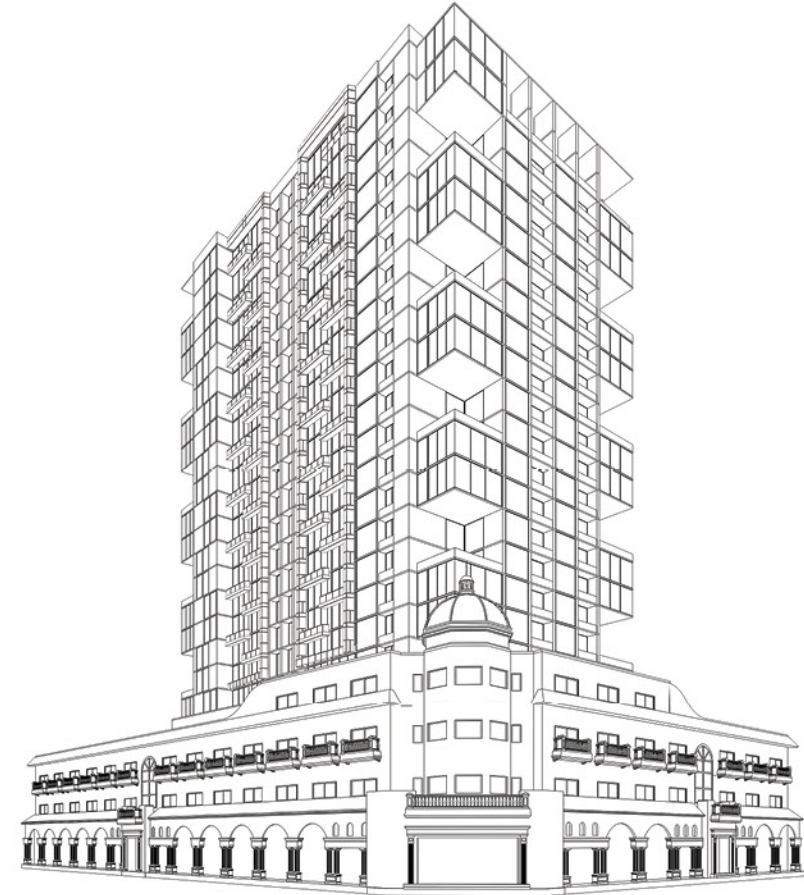
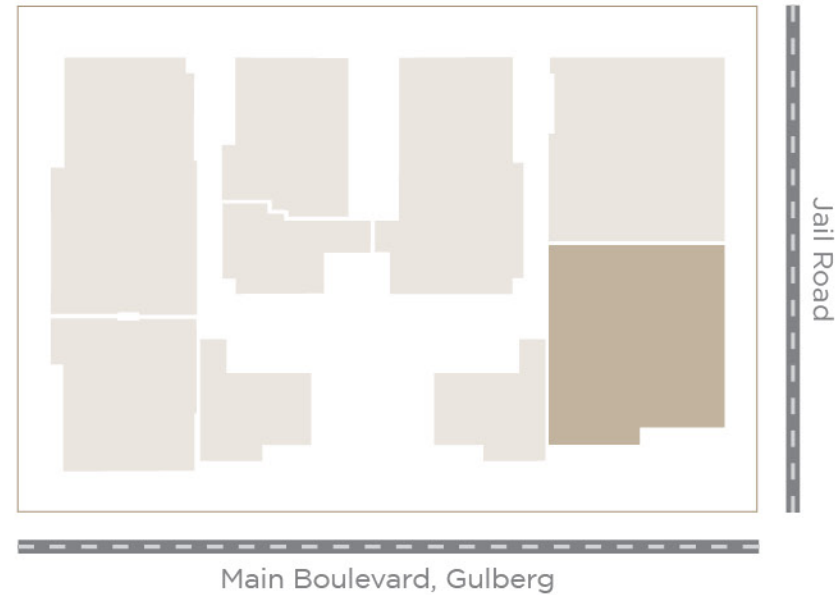


5 BEDROOM DUPLEX APARTMENT

Floors 8th 9th, 12th, 13th,
16th, 17th, 20th, 21st...

- 5 Bedroom
- 5 Bathroom
- 1 Powder
- 1 Dining & Drawing
- 1 Living Room
- 1 Lounge
- 1 Kitchen & G. Kitchen
- 1 Study Room
- 1 Maid Room

KEY PLAN



Five Bed Duplex Type 12
Upper Level

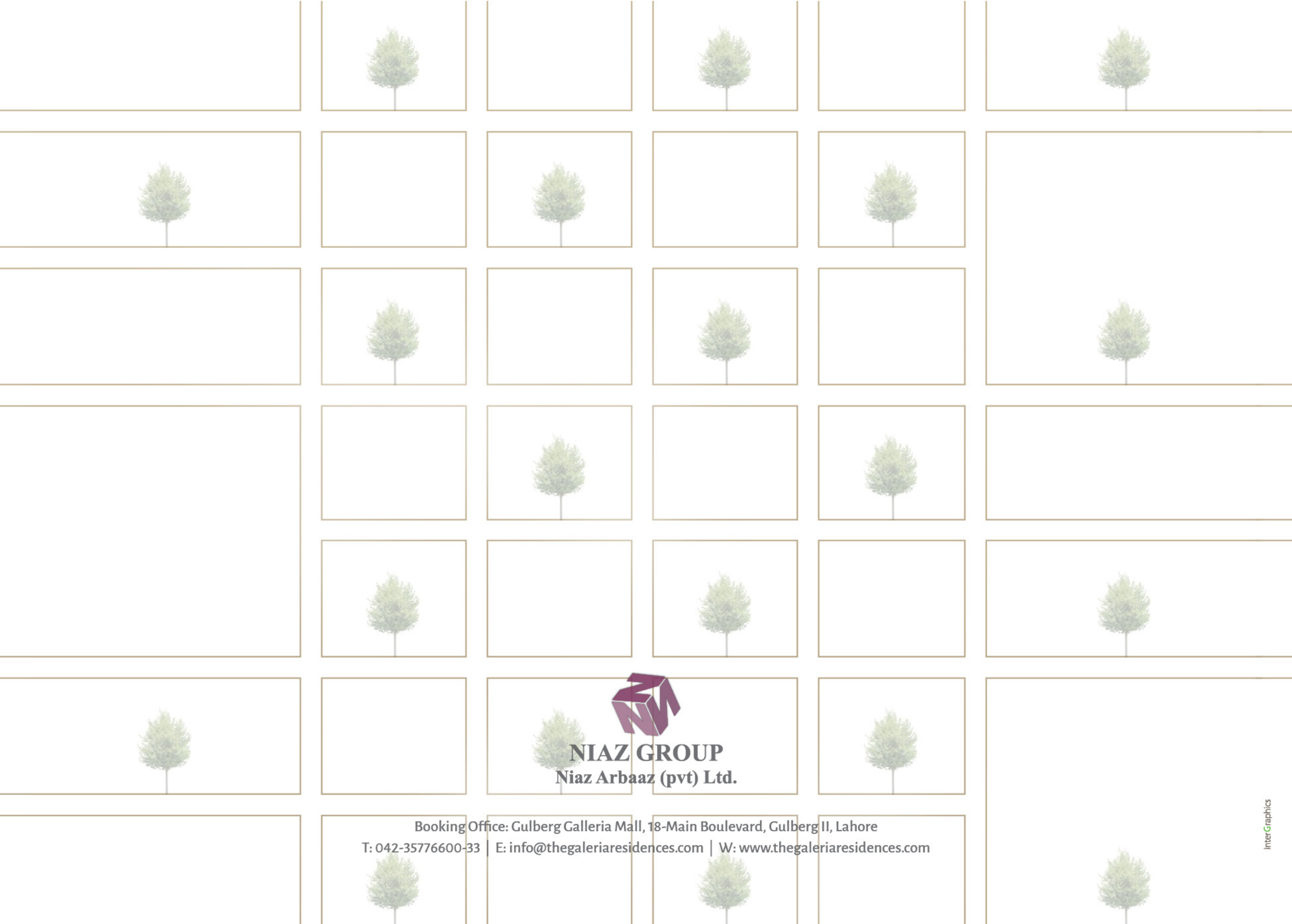


Five Bed Duplex Type 12
Lower Level






THE
GALLERIA
RESIDENCES



NIAZ GROUP
Niaz Arbaaz (pvt) Ltd.

Booking Office: Gulberg Galleria Mall, 18-Main Boulevard, Gulberg II, Lahore
T: 042-35776600-33 | E: info@thegaleriaresidences.com | W: www.thegaleriaresidences.com